

# Healthy Chicago Lawn



Community Assessments – Part 1

September 21, 2004

# Healthy Chicago Lawn Community Assessments – Part 1

---

## **1. Community Health Status**

- **Statistics**

## **2. Health Behaviors**

- **BRFSS survey**

## **3. Forces and Trends**

# Healthy Chicago Lawn Community Assessments – Part 2

---

**At the next meeting we will present:**

**1. Community Perceptions**

- Focus groups
- Key Informant Interviews

**2. CLAM**

**3. Resource Inventory**

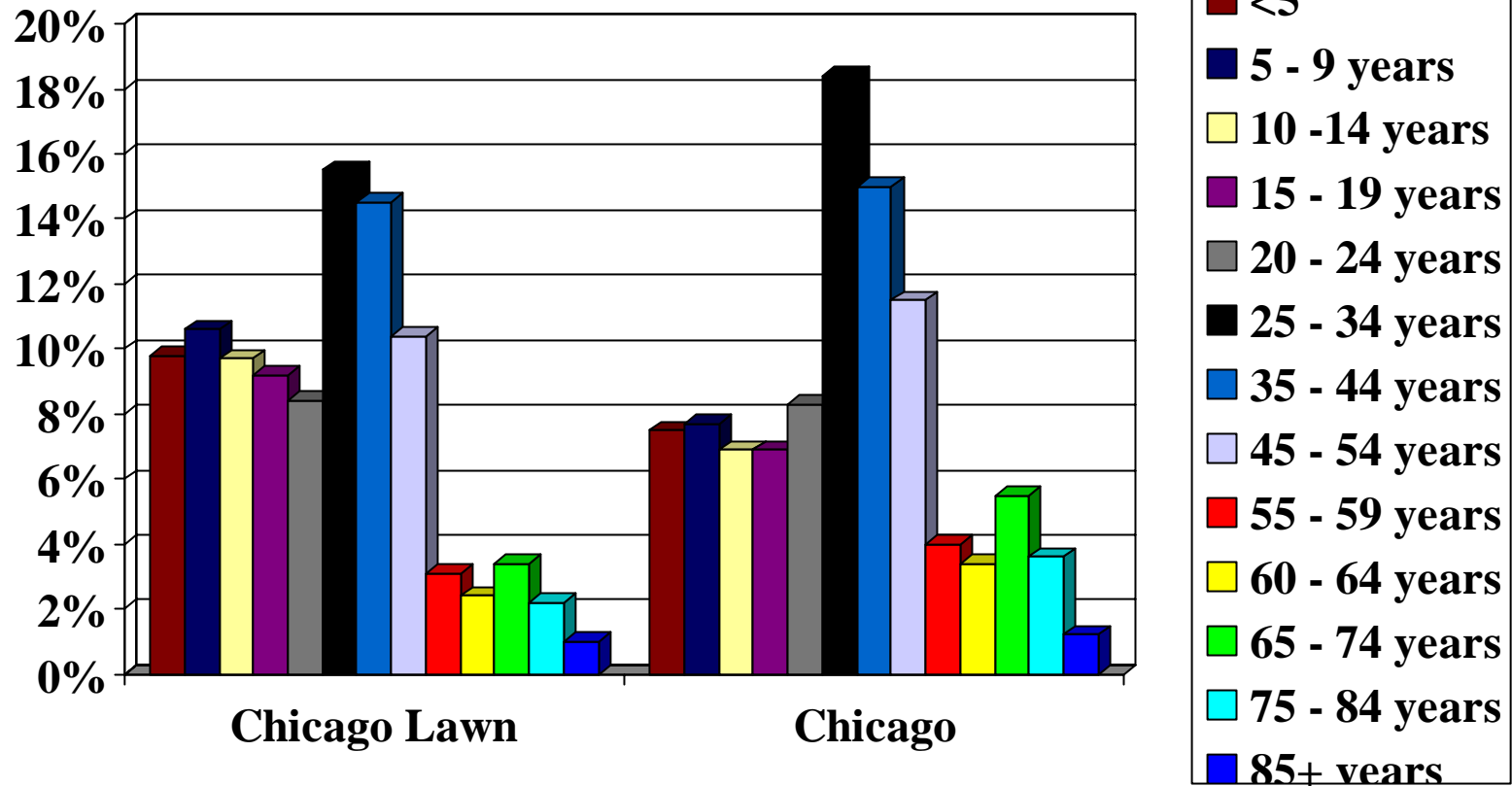
# Indicators

1. Demographics
2. Health Care
3. Disease related
4. Maternal and Child Health
5. Education
6. Crime
7. Behaviors (in BRFSS presentation by Bill Baldyga)

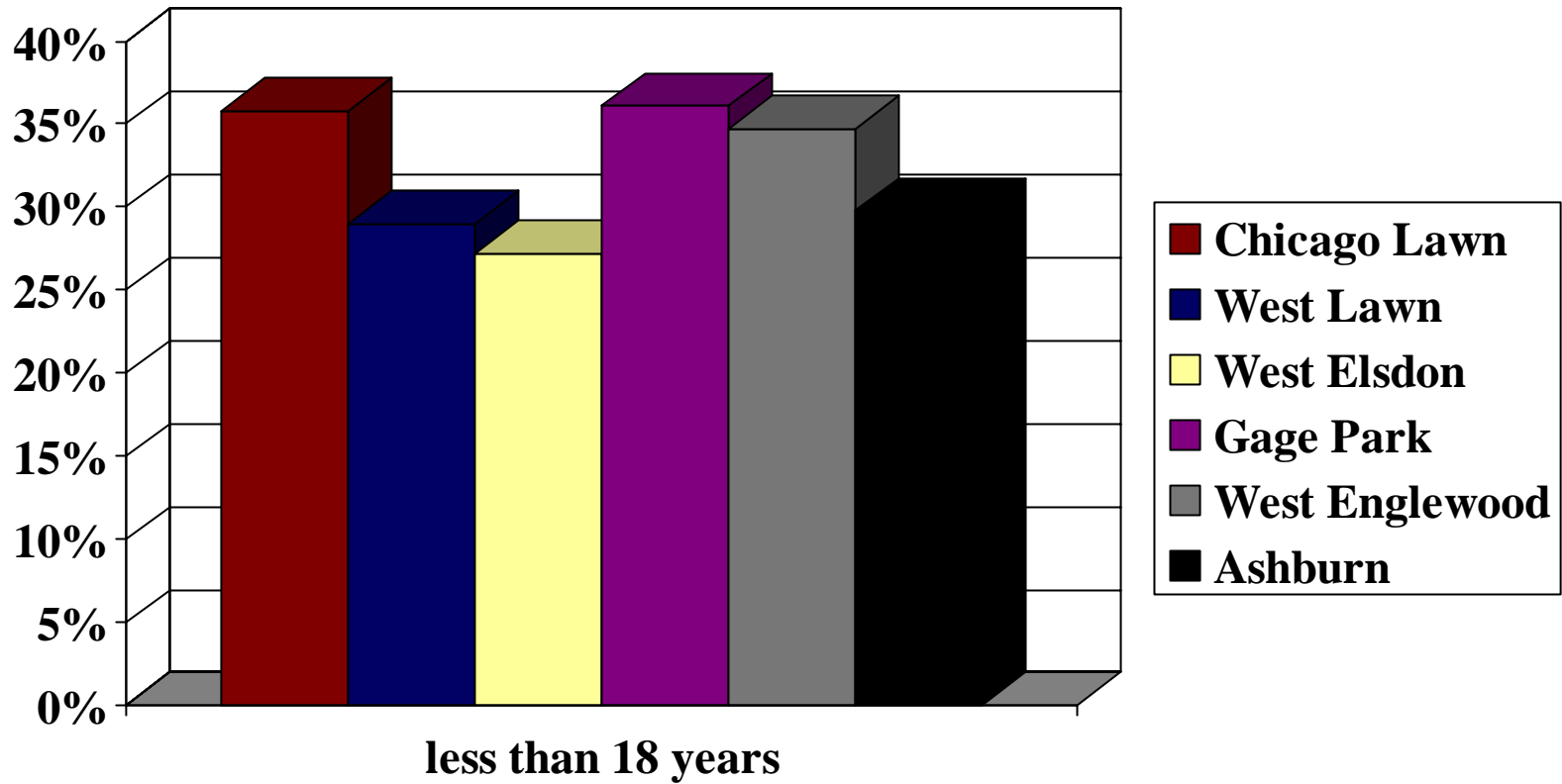
# 1. Demographics

- Age
- Race/ethnicity
- Employment
- Household information
- Educational attainment
- Income
- Housing
- Languages

# Age

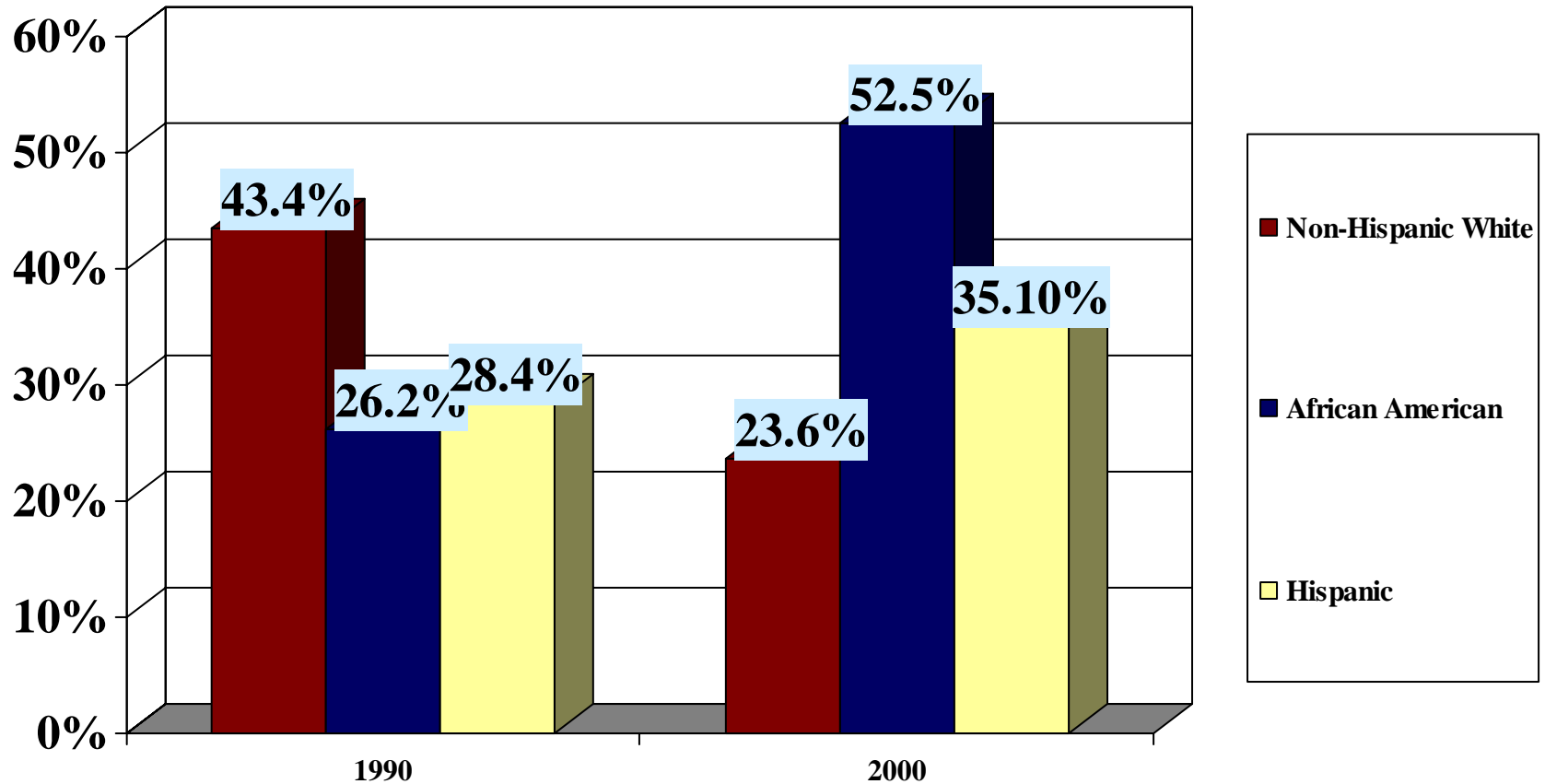


# Age: less than 18 years



# Race/Ethnicity

## Trends: 1990 - 2000



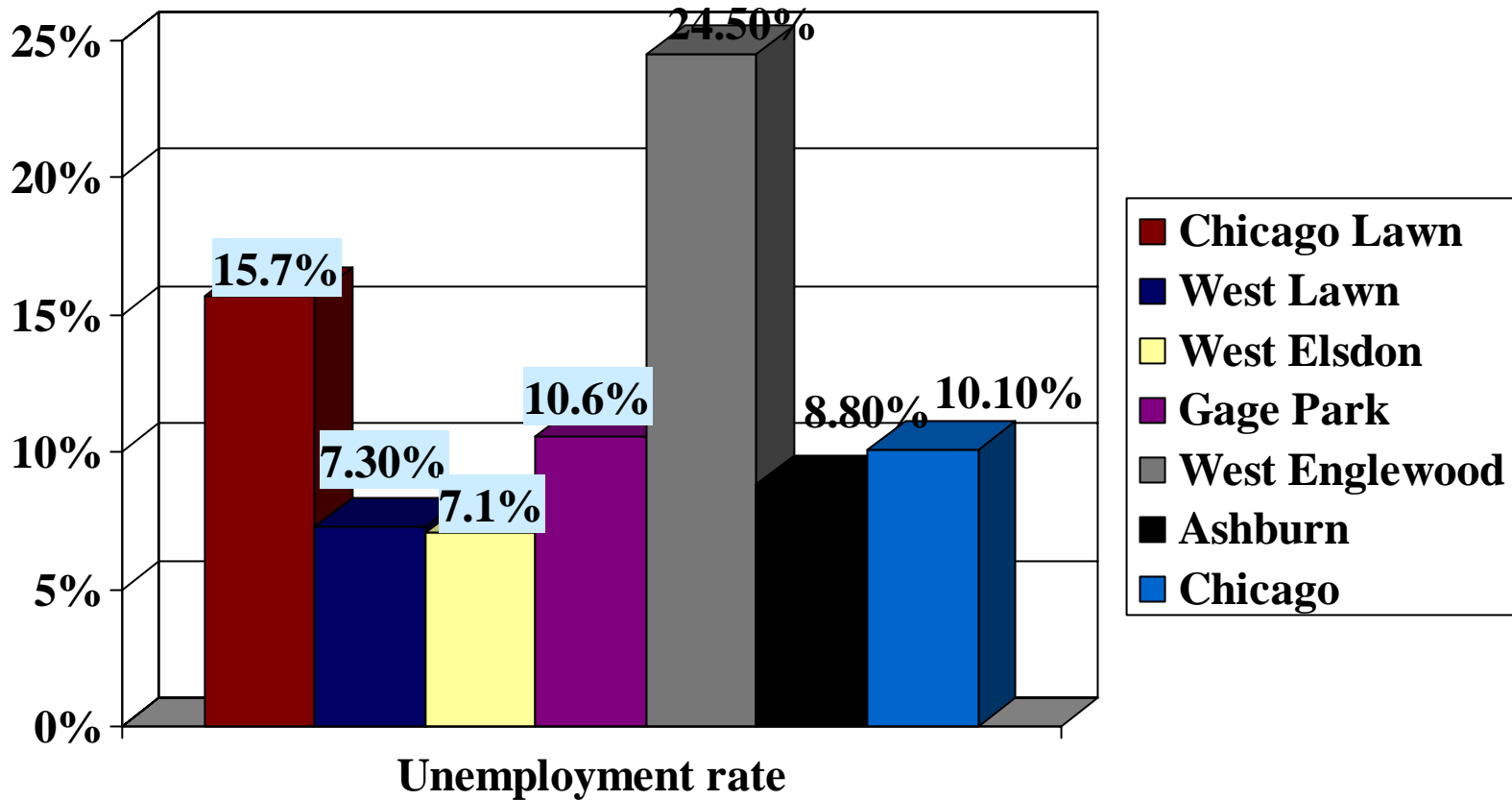
# Foreign born population

- 21% born outside of United States
  - 37% entered U.S. between 1990 and 2000
  - 8.8% from Europe
  - 6.8% from Asia
  - 2% from Africa
  - 82.3% from Latin America

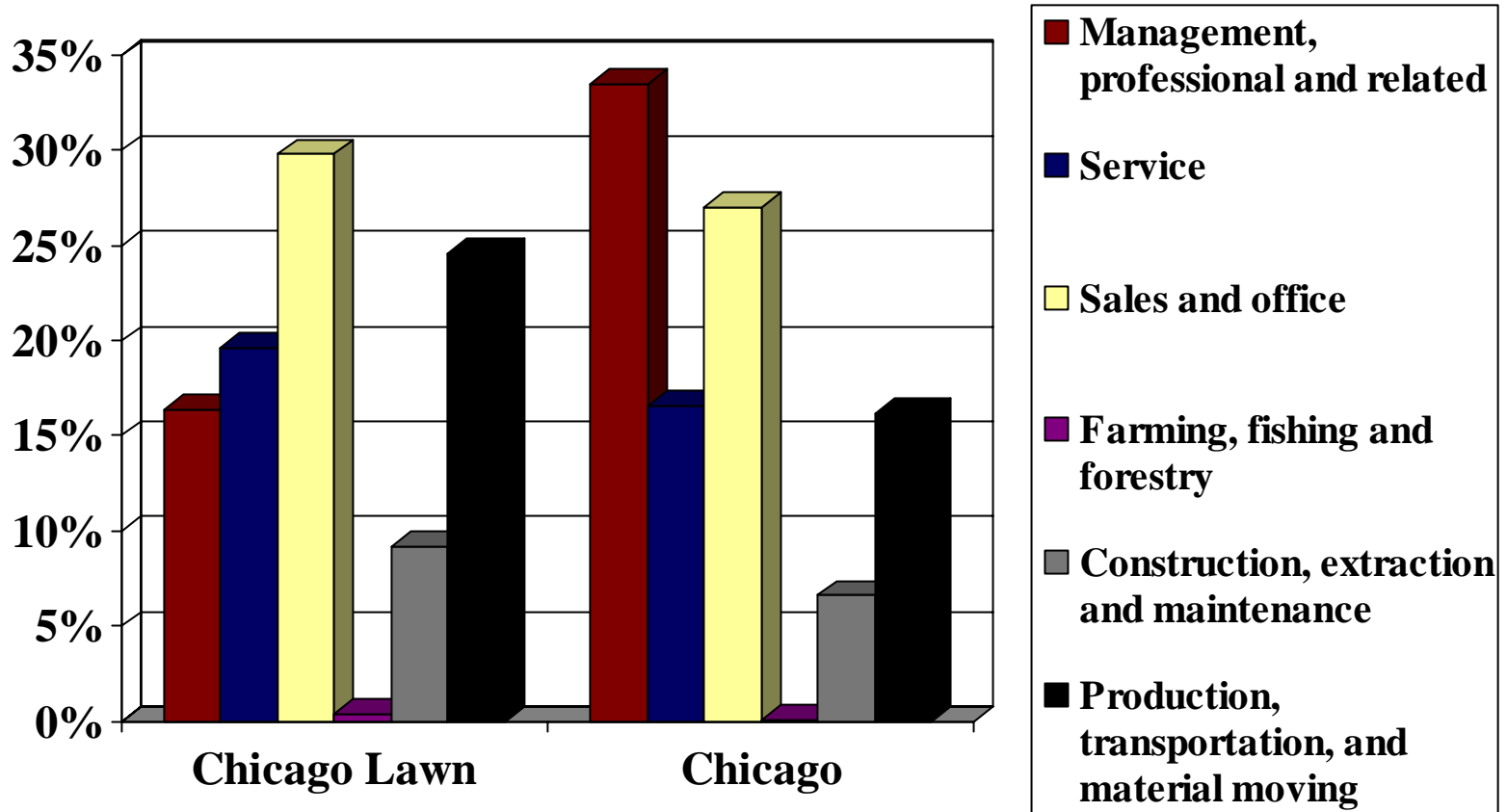
# Family Composition

Household Information	Chicago Lawn	Chicago
Female householder, no husband present	29.8%	18.9%
Female householder, no husband present, with children < 18	38.3%	28.9%
Grandparents living in household 1 or more grandchildren < 18 years and responsible for grandchildren	38%	40.8%

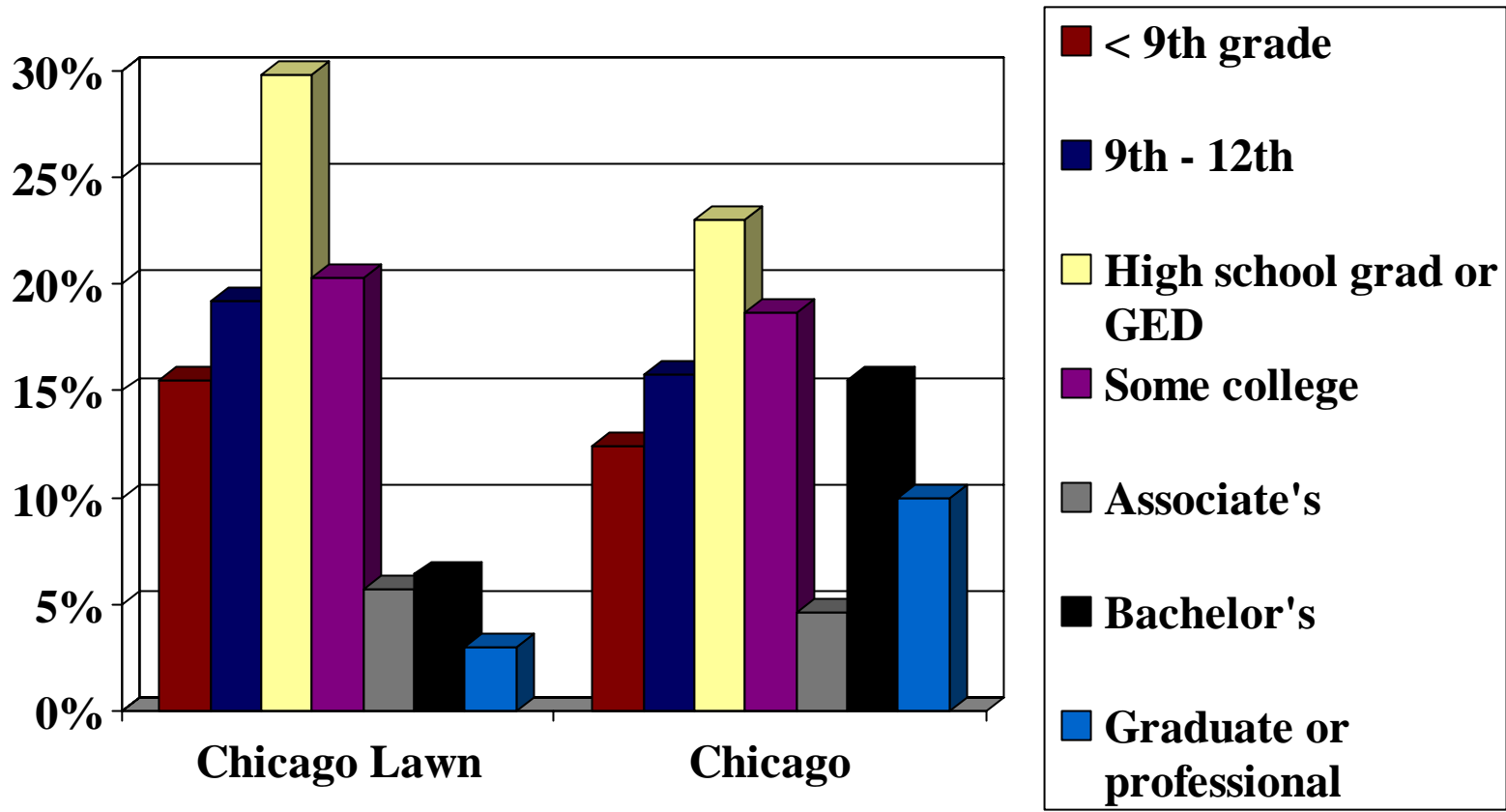
# Employment: Unemployment rate



# Employment: Occupations

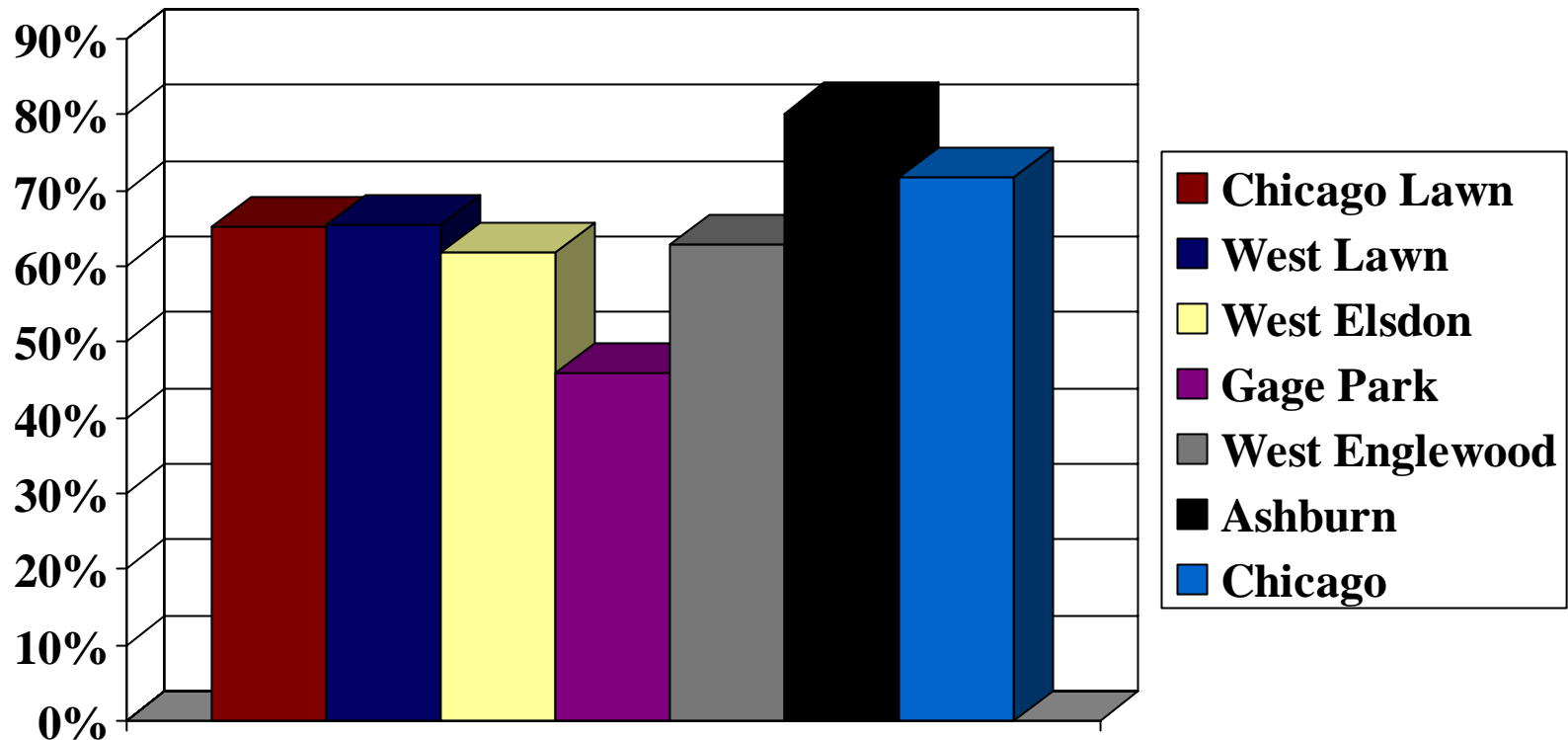


# Educational Attainment

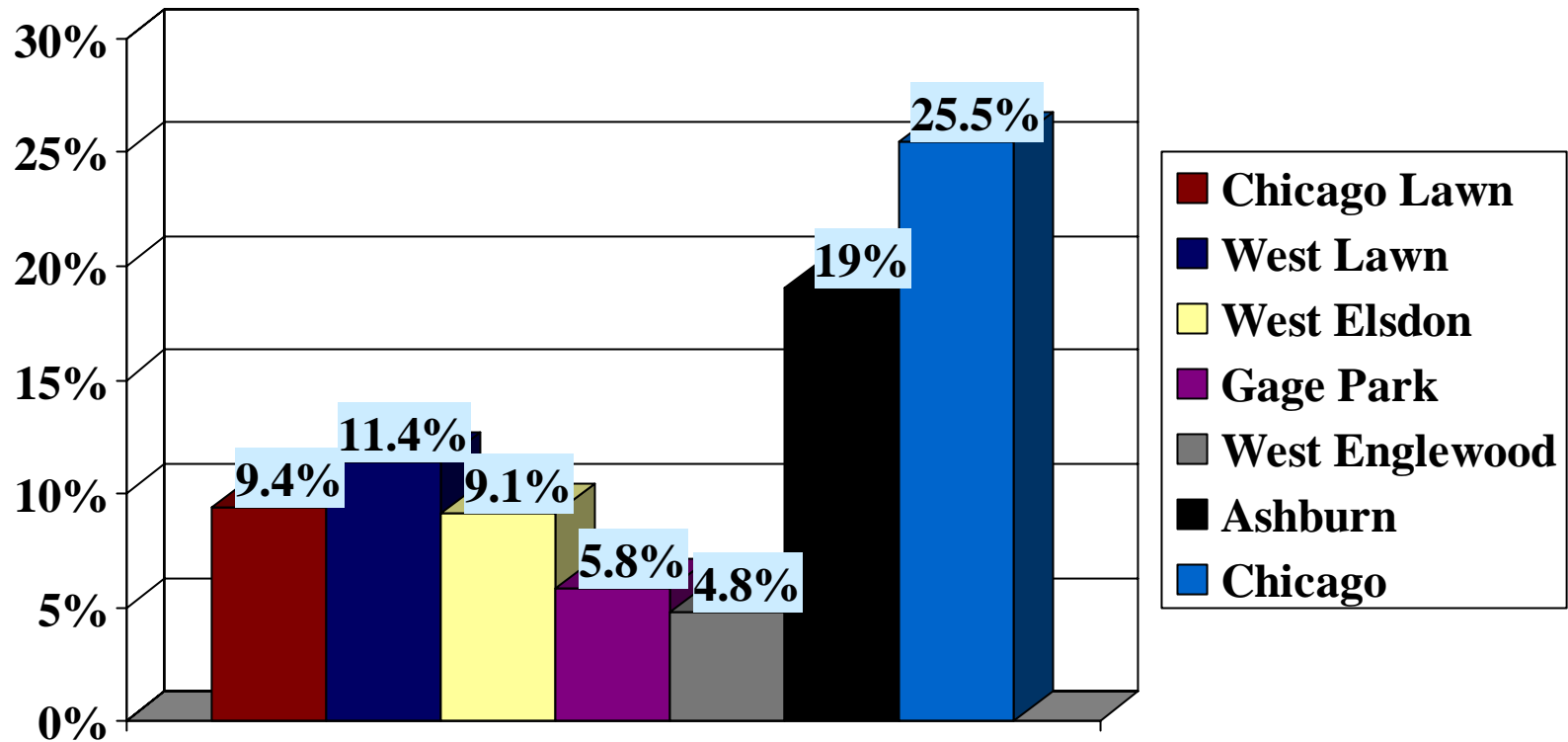


# Educational Attainment:

## High school graduate or higher

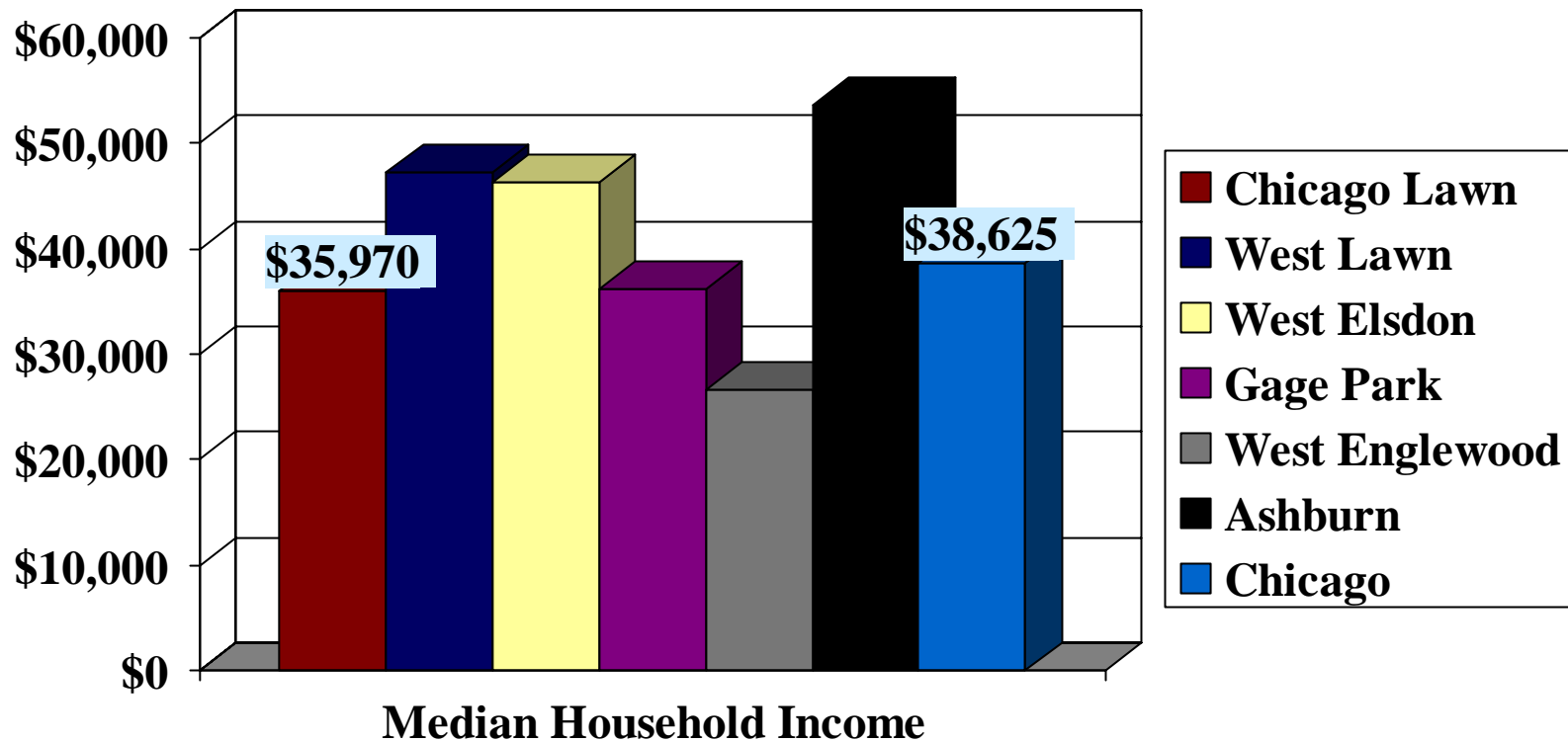


# Educational Attainment: Bachelor's degree or higher



# Income:

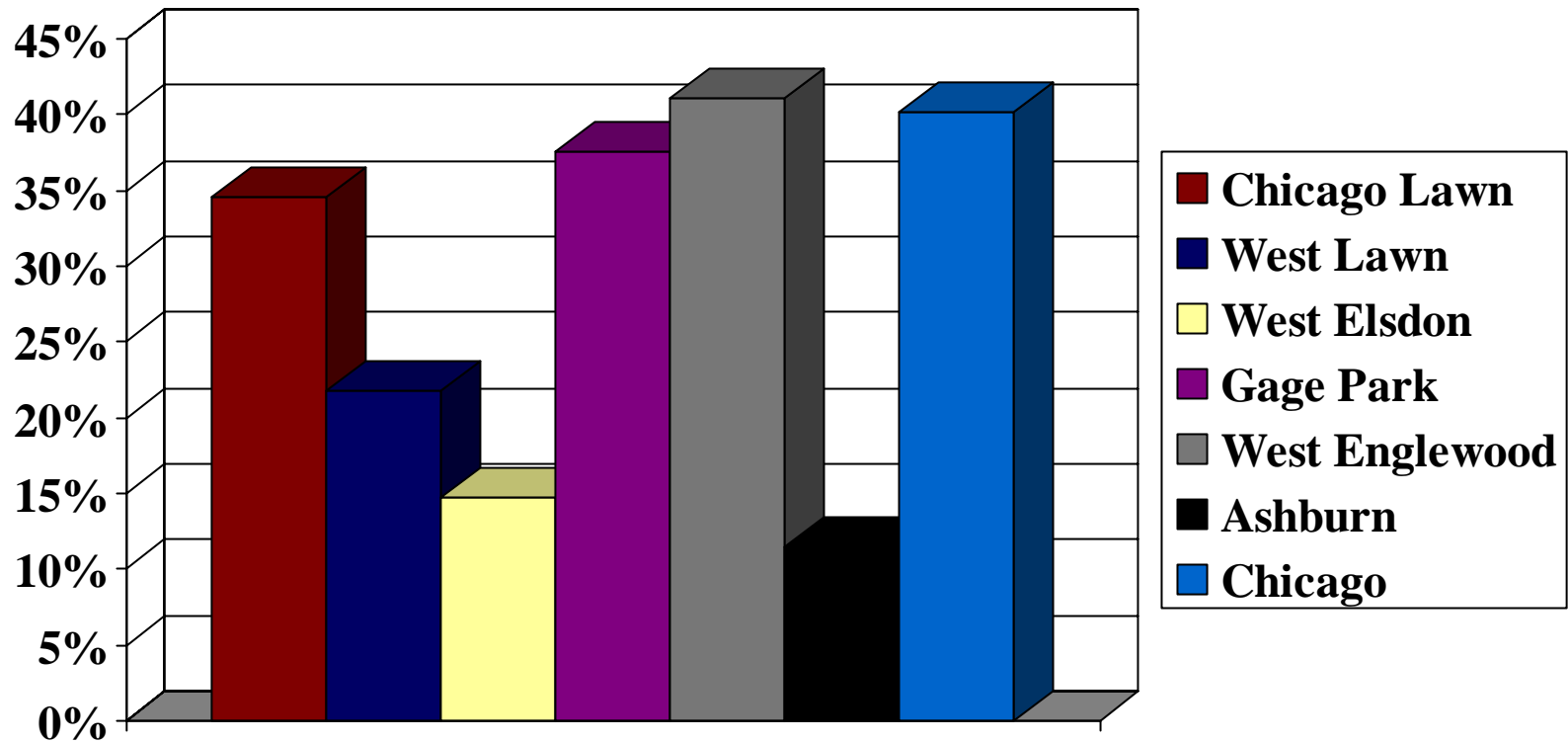
## Median Household Income



# Poverty rates

<b>Community area</b>	<b>Individual poverty rate</b>
Chicago Lawn	19.8%
West Lawn	7.4%
West Elsdon	6.9%
Gage Park	19%
West Englewood	32.1%
Ashburn	6.9%
Chicago	19.6%

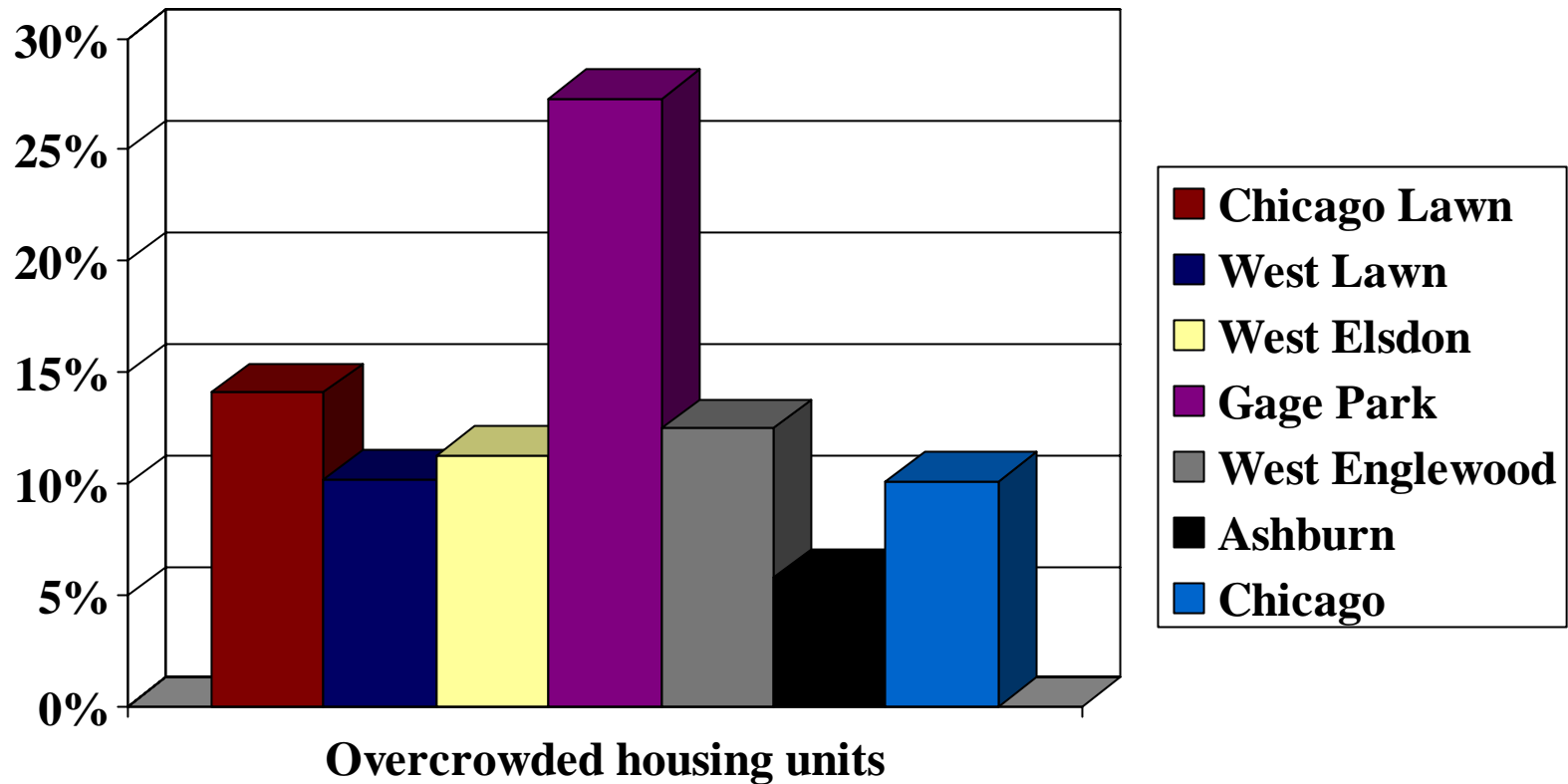
# Poverty Rates: Female householder, no husband present, w/children < 18 years



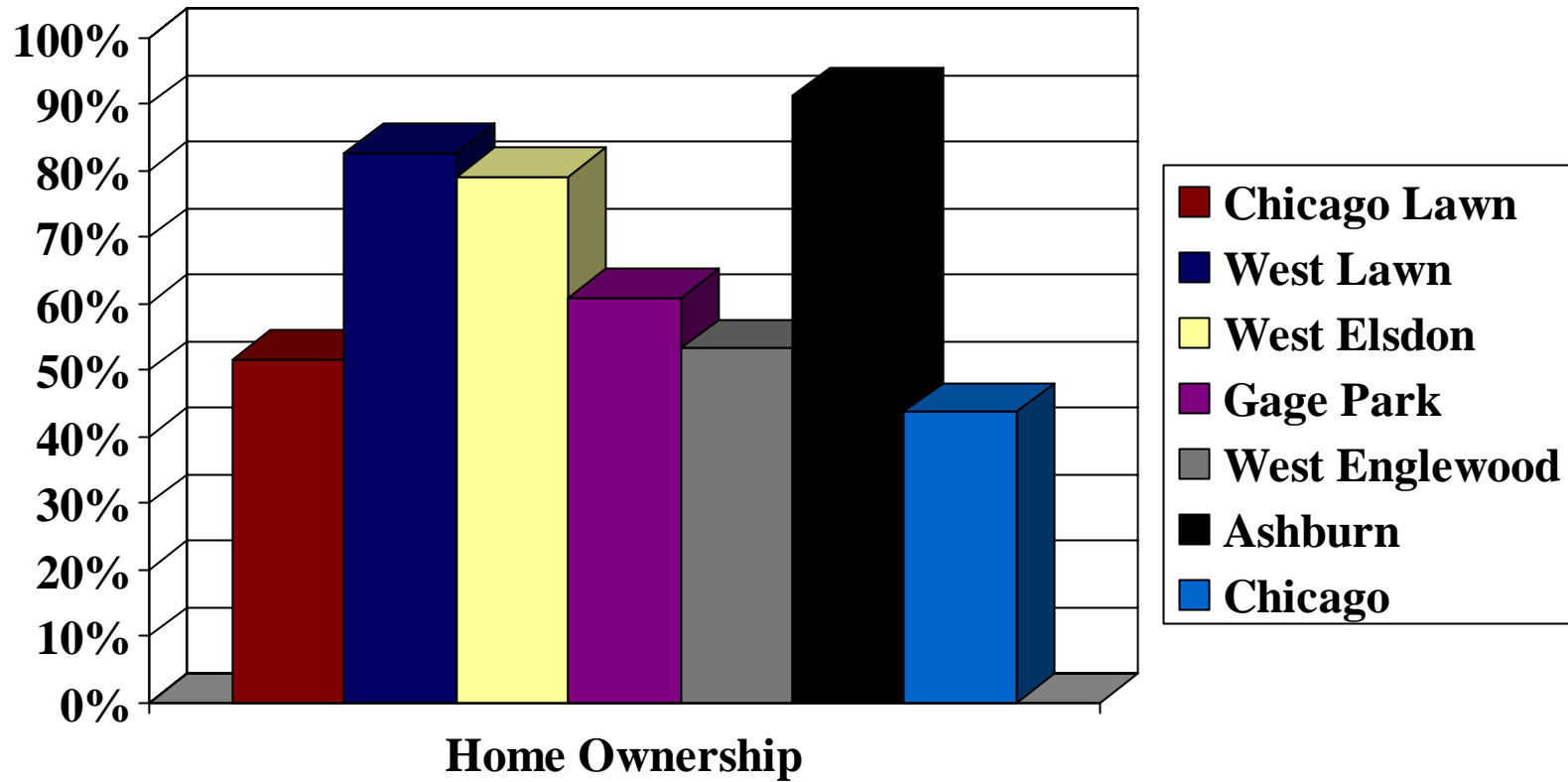
# Housing: Vacancy rates

<b>Community Area</b>	<b>Vacancy Rate</b>
Chicago Lawn	7.7%
West Lawn	3.3%
West Elsdon	3.9%
Gage Park	5%
West Englewood	12%
Ashburn	2.5%
Chicago	7.9%

# Housing: Overcrowding



# Housing: Home Ownership



# Language:

## Primary language spoken at home in Chicago Lawn

- English: 61.8%
- Spanish: 32.6%
- Other Indo-European language: 3.1%
- Asian and Pacific Island: 1%

# Language:

## English proficiency

- Of those speaking Spanish, 54% report speaking English less than very well
- Of those speaking another Indo-European language, 47% report speaking English less than very well
- Of those speaking an Asian or Pacific Islander language, 38% report speaking English less than very well

## 2. Health Care

- Childcare
- Payer Mix for Hospital Discharges
- Physician Supply and Demand

# Childcare

Type of Care	Number of Providers	Capacity
<b>Total Center Care</b>	<b>16</b>	<b>1,430</b>
Child Care Center	8	494
Before/After School Only	1	300
Head Start/Early Head Start Only	1	51
ISBE Pre-K Only	1	68
Park/Recreation Only	3	425
School Age Program	2	92
<b>Family Child Care</b>	<b>95</b>	<b>715</b>
<b>Known License-Exempt Family Child Care</b> (paid by child care assistance program)	<b>698</b>	
<b>Total</b>	<b>809</b>	<b>3,575</b>
<b>Demand for Childcare</b>		<b>9,072</b>

**Act for Children estimates demand for childcare in Chicago Lawn is 9,072 slots (about 5,500 less than exists).** This is a rough estimate based on 2000 census data showing 16,218 children ages 0 to 12, estimating that 9,072 live in families where all parents present in the household work. Not all working parents seek child care outside of the family, and families with a non-working parent may also seek care.

# Payer Mix for 2001 (calendar year) Discharges Originating from 60629 Zip Code

	<b>Discharges</b>	<b>Percent of Total</b>
FEE-FOR-SERVICE	4707	31%
HMO	1047	7%
MEDICAID	4643	31%
MEDICARE	3224	22%
MEDICARE RISK	1	<1%
OTHER	440	3%
SELF-PAY	908	6%
<b>TOTAL</b>	<b>14970</b>	<b>100%</b>

# 2003 Physician Supply and Demand Primary Care

General and Family Practice:			Internal Medicine:		
	Supply	Demand		Supply	Demand
60629	14	25	60629	23	13
60636	2	11	60636	2	6
60652	3	9	60652	4	5
Obstetrics and Gynecology:			Pediatrics:		
	Supply	Demand		Supply	Demand
60629	4	10	60629	6	17
60636	0	4	60636	3	7
60652	0	4	60652	4	5

**Primary care (the above 4 specialties) for all 3 zip codes:**

**Total Supply = 65, Total demand= 116**

# 2003 Physician Supply and Demand Specialty Care

<b>Cardiology:</b>			<b>General Surgery:</b>		
	<b>Supply</b>	<b>Demand</b>		<b>Supply</b>	<b>Demand</b>
<b>60629</b>	5	3	<b>60629</b>	0	4
<b>60636</b>	0	2	<b>60636</b>	0	2
<b>60652</b>	0	1	<b>60652</b>	0	2
<b>Neurology:</b>			<b>Psychiatry:</b>		
	<b>Supply</b>	<b>Demand</b>		<b>Supply</b>	<b>Demand</b>
<b>60629</b>	1	1	<b>60629</b>	1	5
<b>60636</b>	0	0	<b>60636</b>	1	2
<b>60652</b>	0	0	<b>60652</b>	0	2

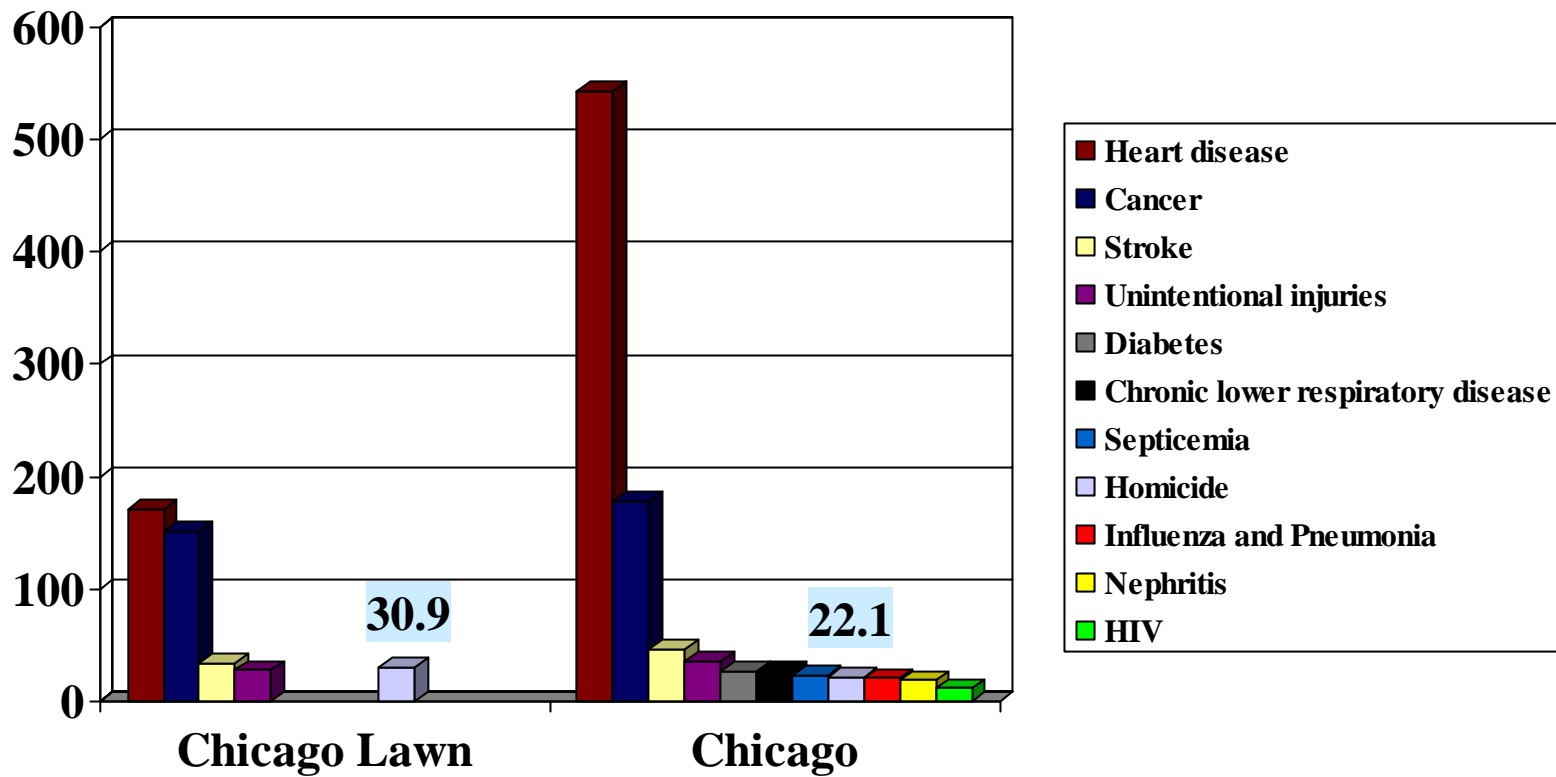
**Specialty care (including, but not limited to, the above 4 specialties) for all 3 zip codes:**

**Total Supply = 38, Total Demand = 89**

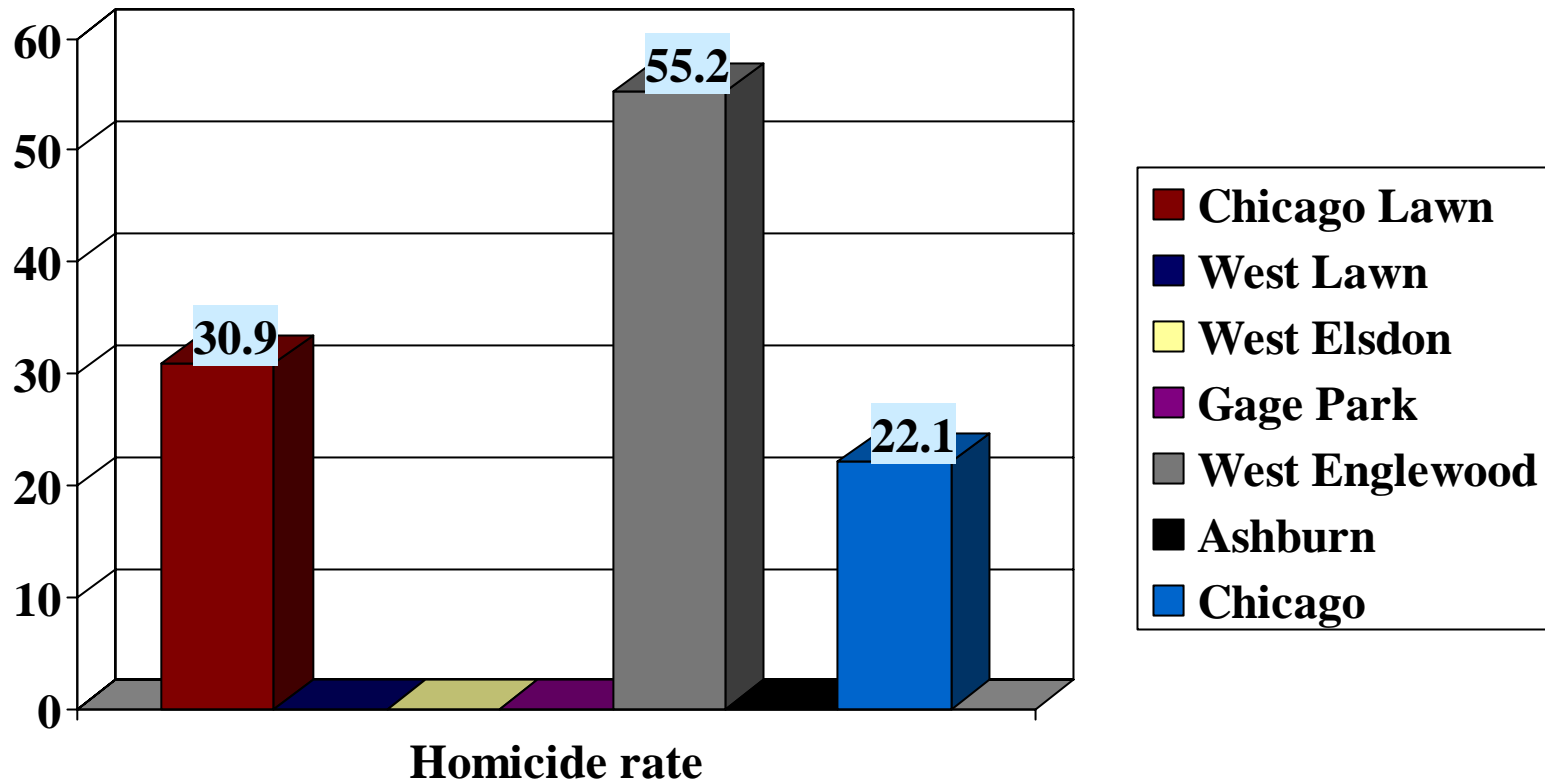
### 3. Disease related

- Mortality rates
- Asthma, diabetes, and cardiovascular disease prevalence
- Mental illness rates
- Sexually transmitted infection rates

# Mortality Rates, 2001 per 100,000



# Mortality rates: Homicide by community area



# Asthma ACSC hospitalizations per 10,000

<b>Hospitalizations</b>	<b>Chicago Lawn</b>	<b>Chicago</b>
Adult asthma hospitalizations	13/10,000	19.6/10,000
Pediatric asthma hospitalizations	9.9/10,000	9.1/10,000

# Diabetes ACSC hospitalizations, per 10,000

<b>Hospitalization</b>	<b>Chicago Lawn</b>	<b>Chicago</b>
Due to diabetes long-term complications	7.5	9.9
Due to diabetes short-term complications	3.1	4.9
Due to uncontrolled diabetes	2.6	5.4
Due to lower-extremity amputation among diabetics	2	2.9

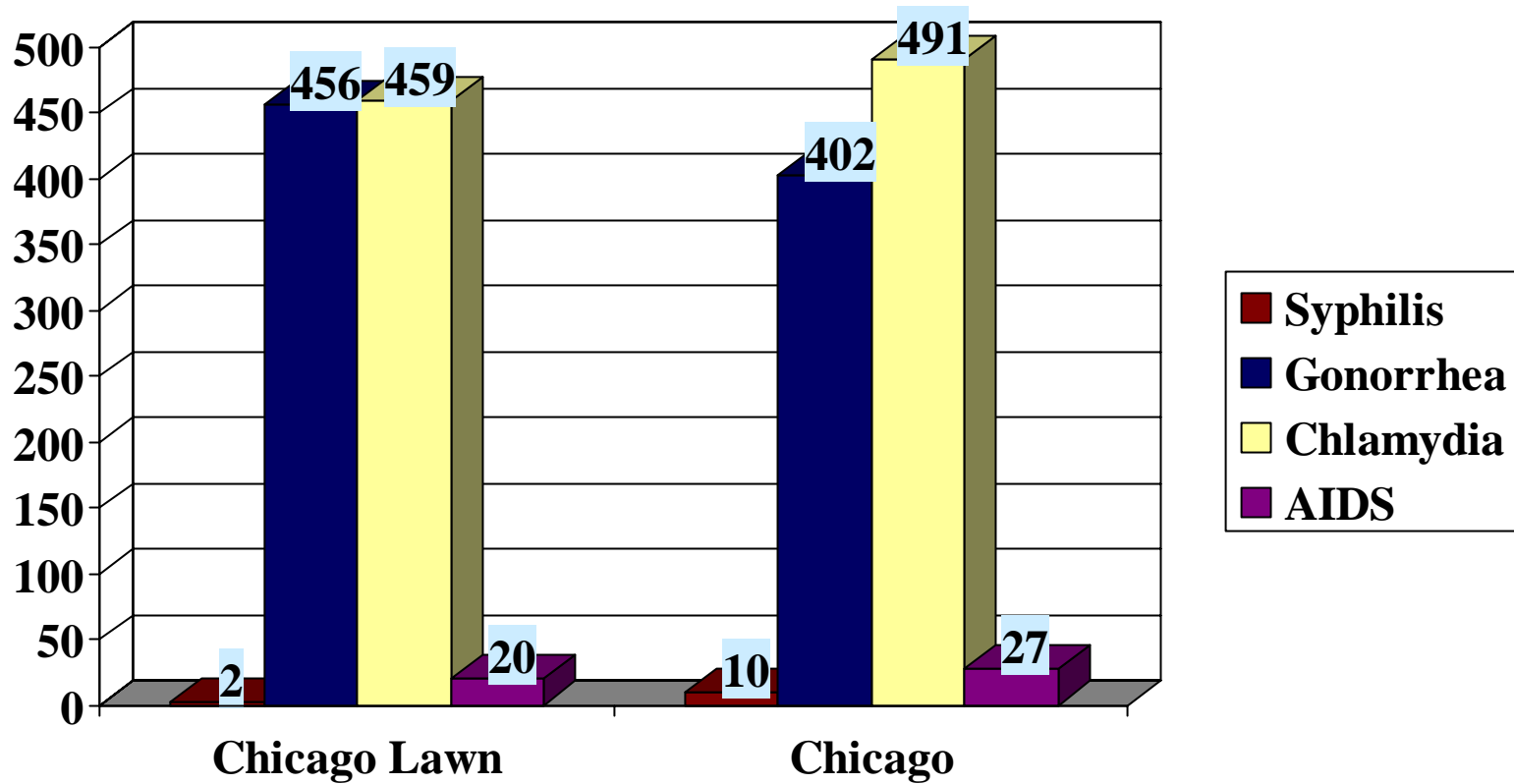
## Cardiovascular disease ACSC hospitalizations per 10,000

Hospitalization	Chicago Lawn	Chicago
Due to heart disease	120	146
Due to chest pain	29.3	39.7
Due to stroke	26.7	34.8
Due to congestive heart failure	34	51.3
Due to angina without procedure	2.9	4.9

# Hospitalizations due to Mental Illness per 10,000

<b>Hospitalization</b>	<b>Chicago Lawn</b>	<b>Chicago</b>
Due to mental disorders, non drug/alcohol related	77.7	121.3
Due to mental disorders, drug/alcohol related	35.7	59.2

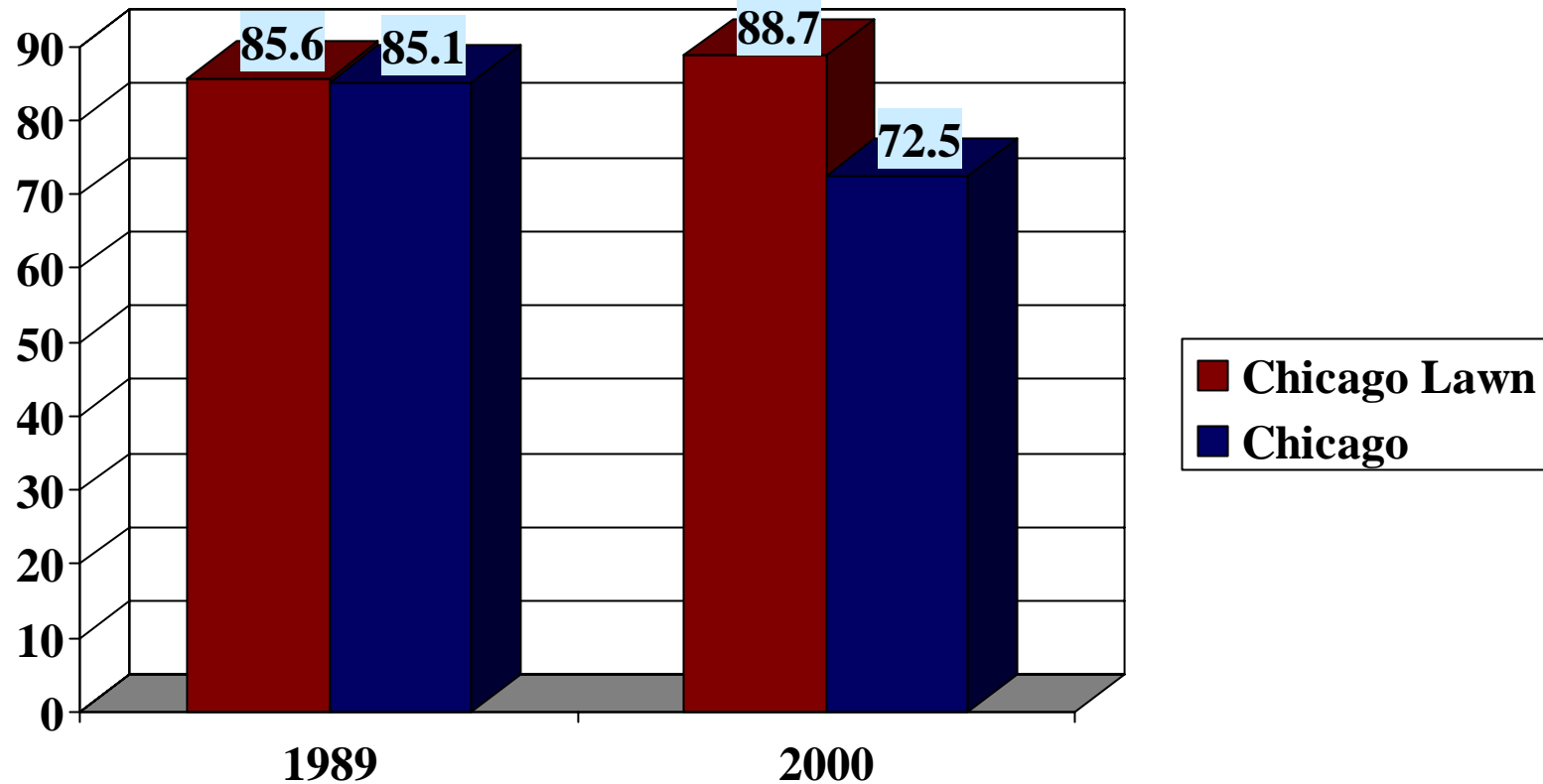
# Rates of STIs per 100,000



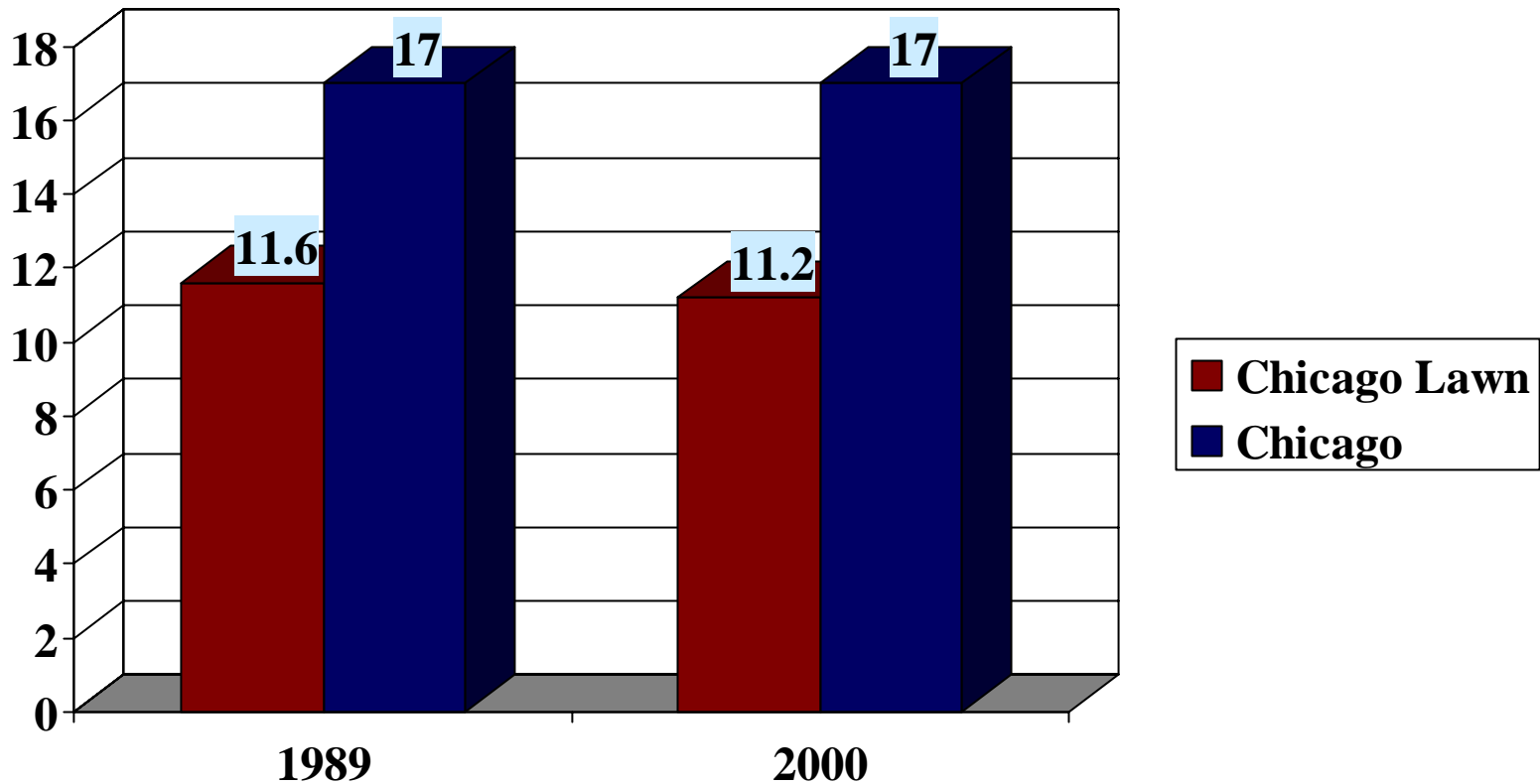
# 4. Maternal and Child Health

- Births
- Infant Mortality
- Low birthweight
- No prenatal care
- Teen births
- Maternal smoking
- Elevated blood lead levels

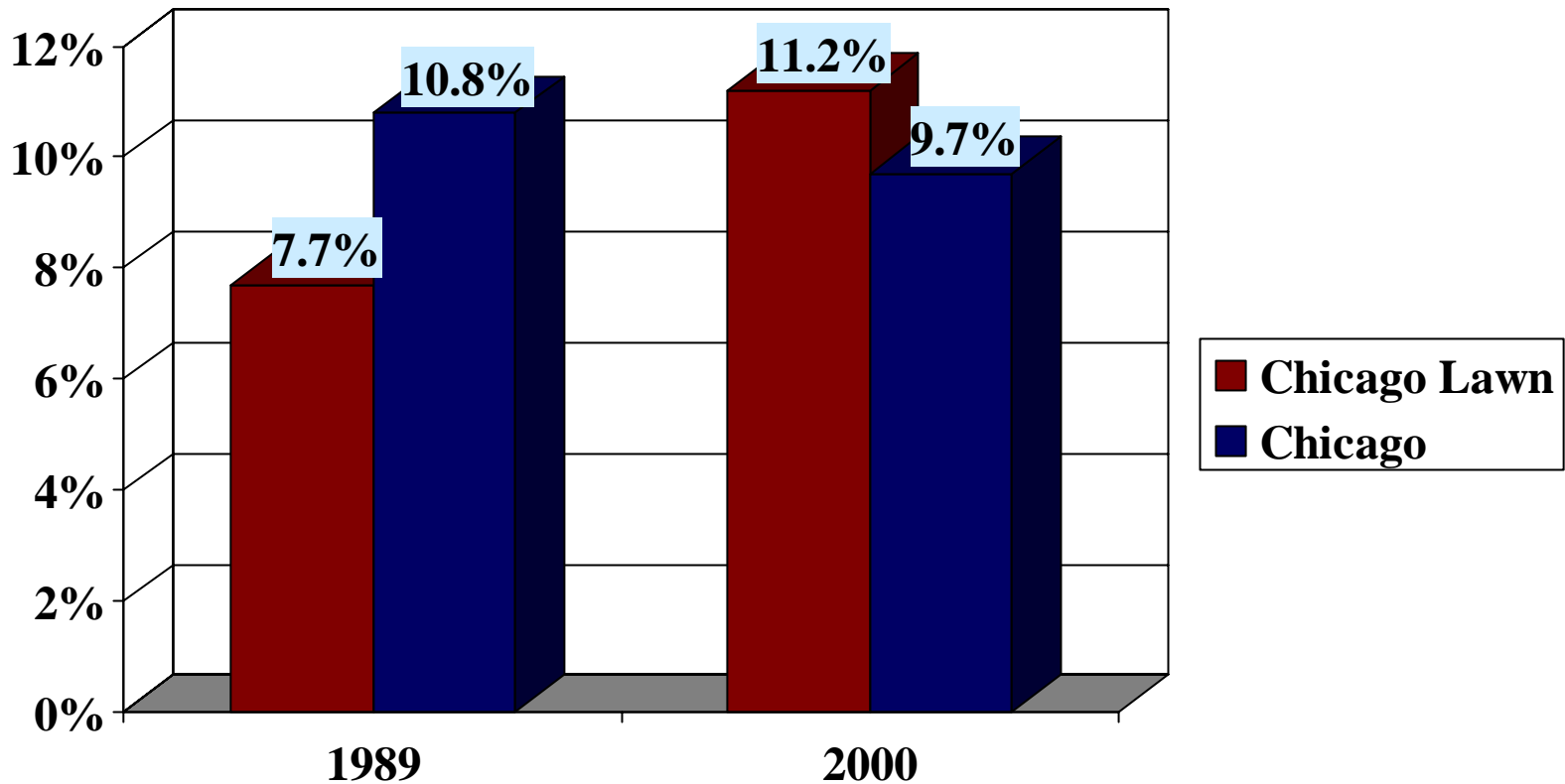
# Maternal and Child Health: Birth rate, per 1,000



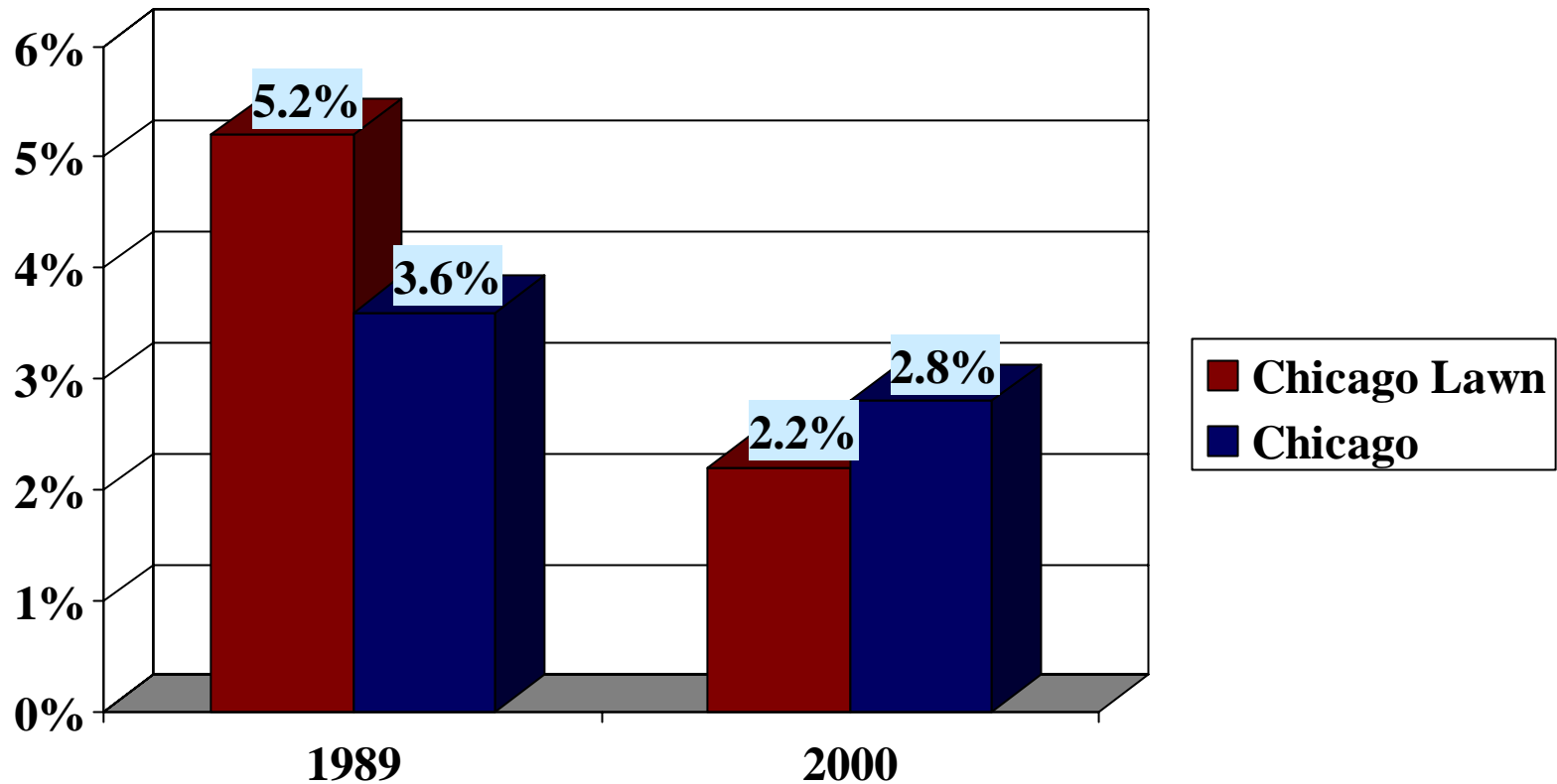
# Maternal and Child Health: Infant Mortality rate, per 1,000



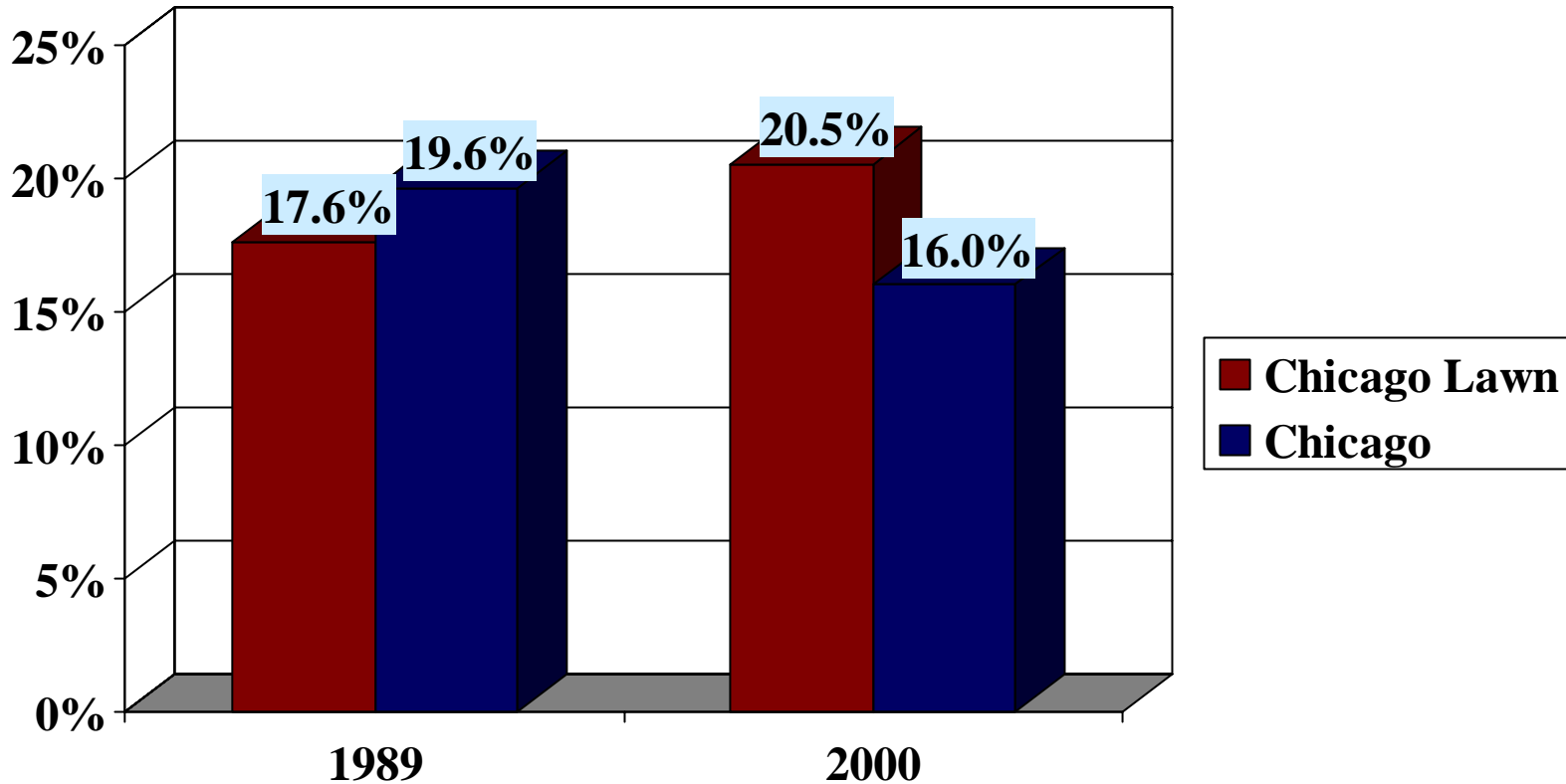
# Maternal and Child Health: Low birthweight



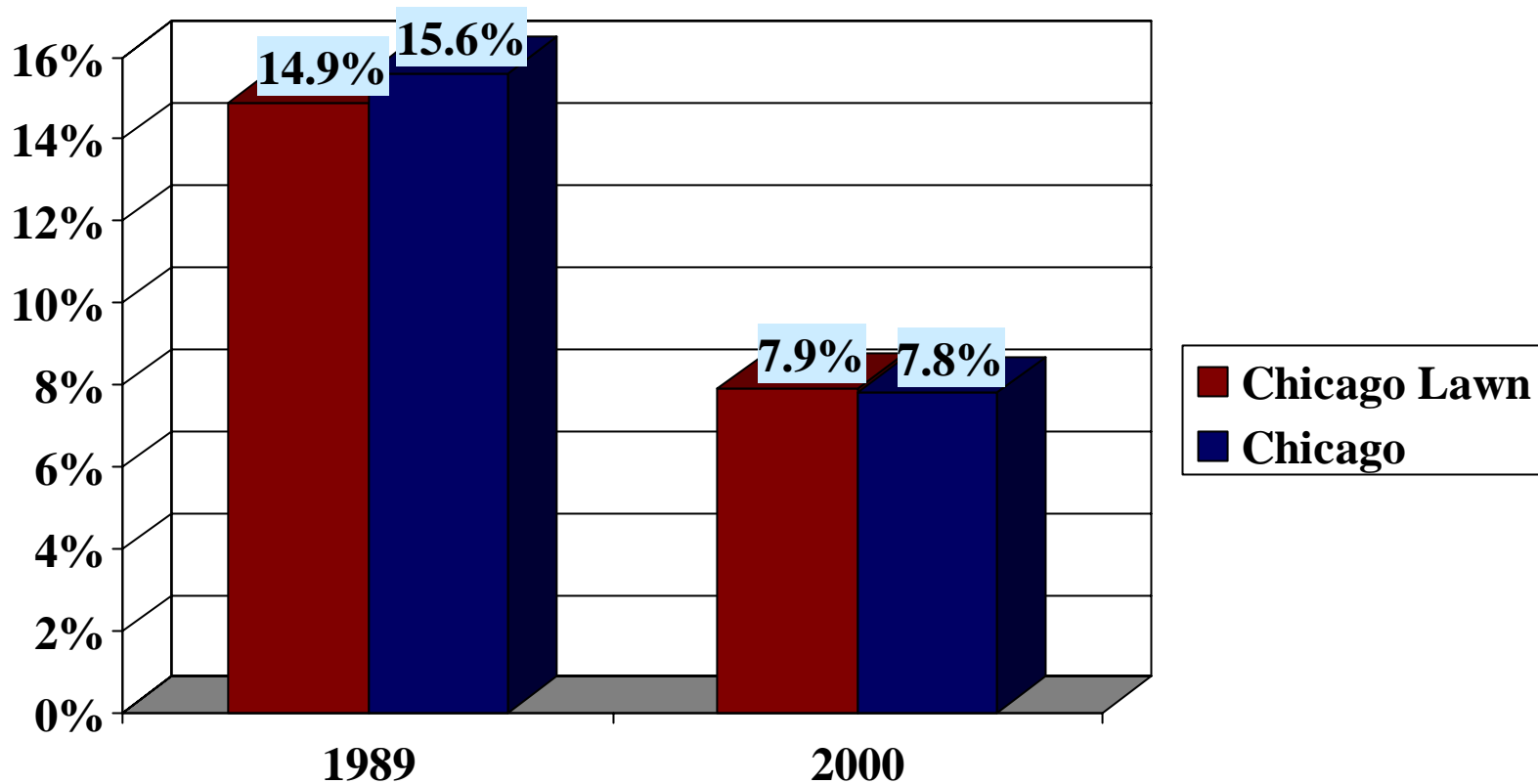
# Maternal and Child Health: No prenatal care



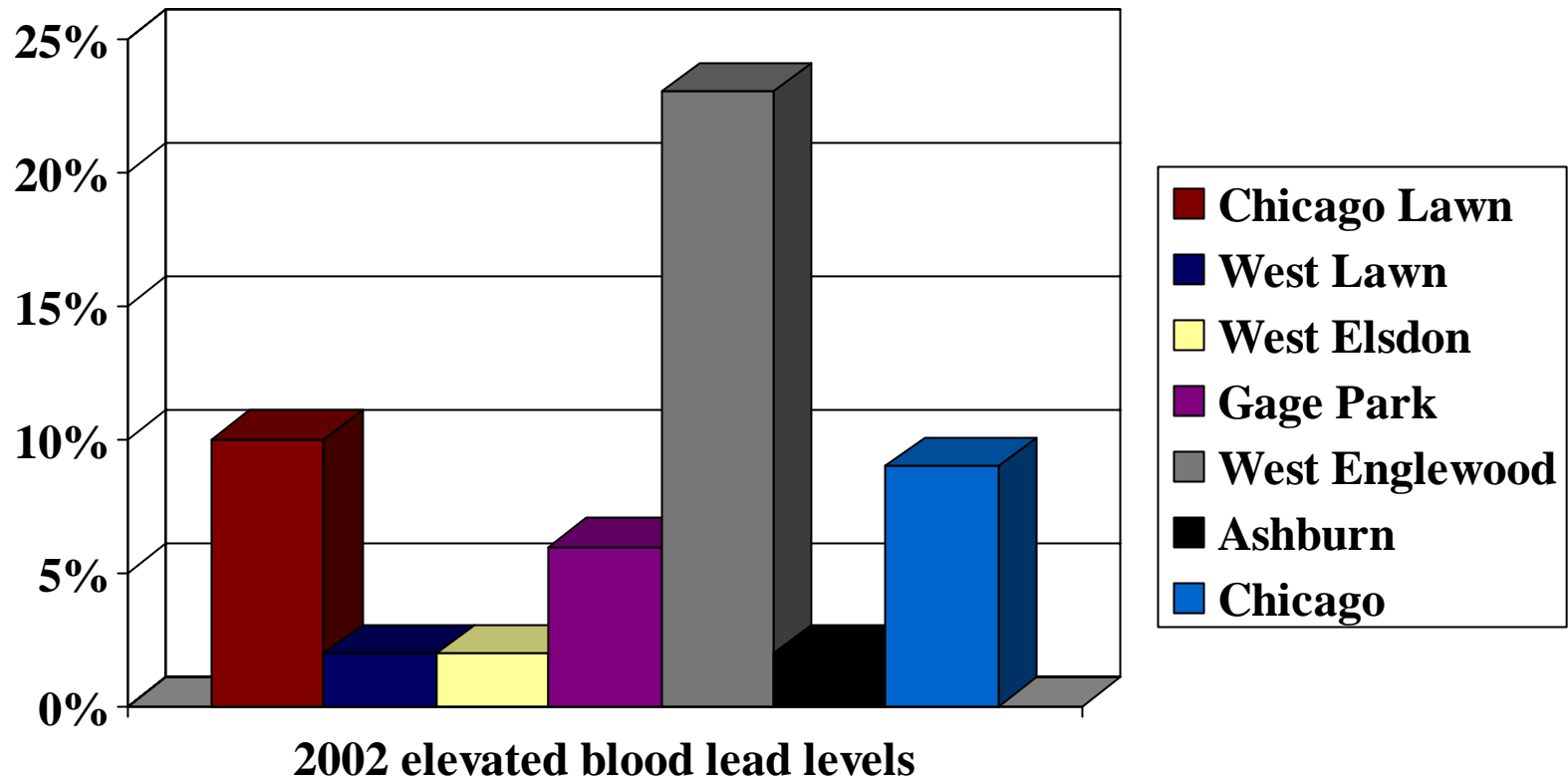
# Maternal and Child Health: Teen births



# Maternal and Child Health: Maternal Smoking



# Maternal and Child Health: Elevated lead levels in children 6 and under

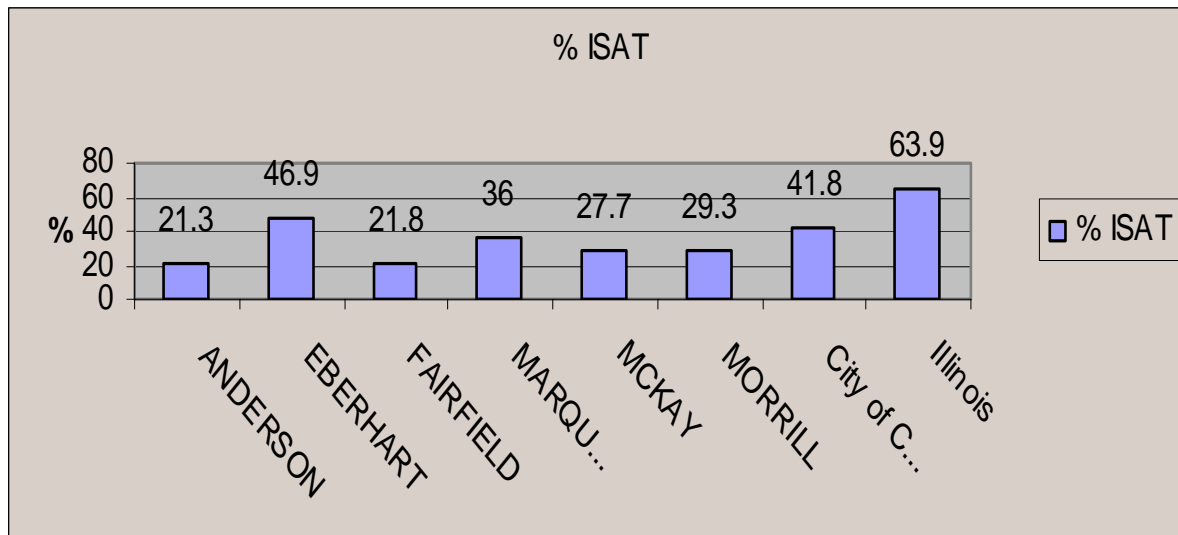


# 5. Education

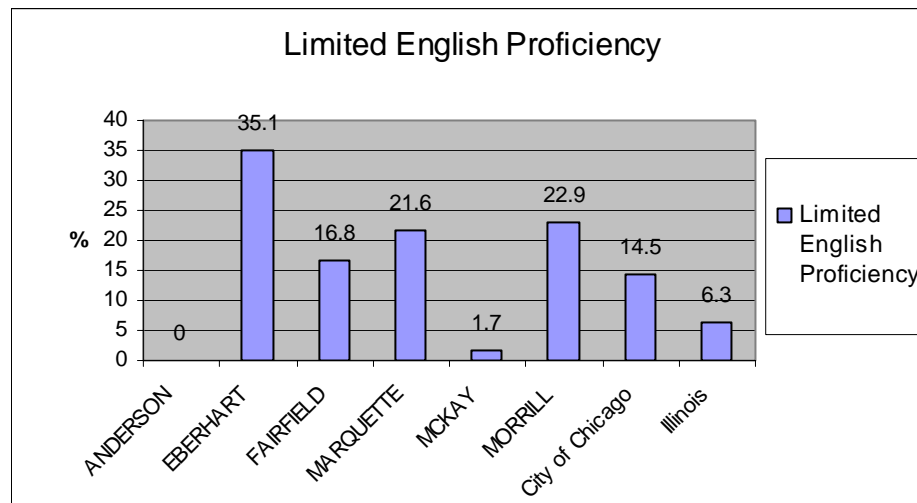
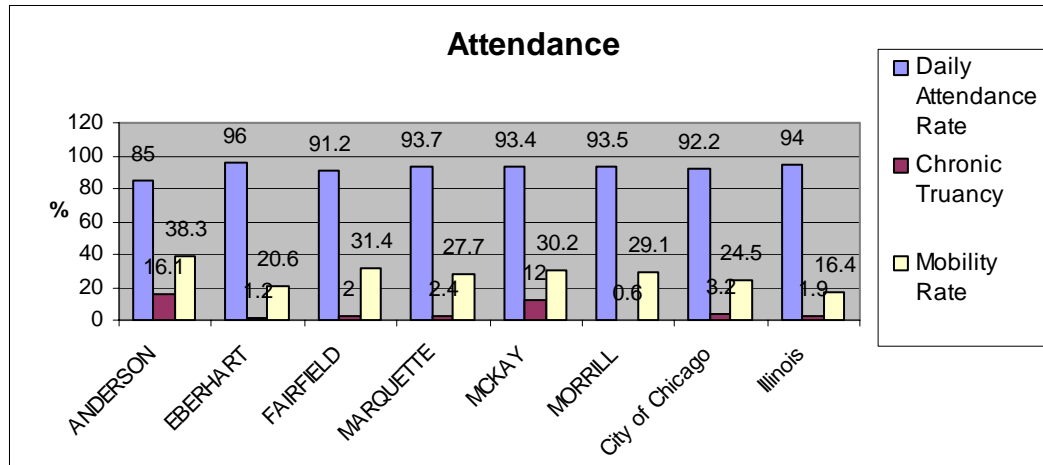
- Elementary and Middle Schools
- High Schools

# Elementary and Middle Schools

- Accountability Rating: **Anderson** and **Fairfield** designated as *Probation*, **McKay** and **Morrill** as *Challenge*, **Eberhart** as *Merit* and **Marquette** as *Opportunity*
- None meet the Adequate Yearly Progress Rating
- All area elementary schools are overcrowded

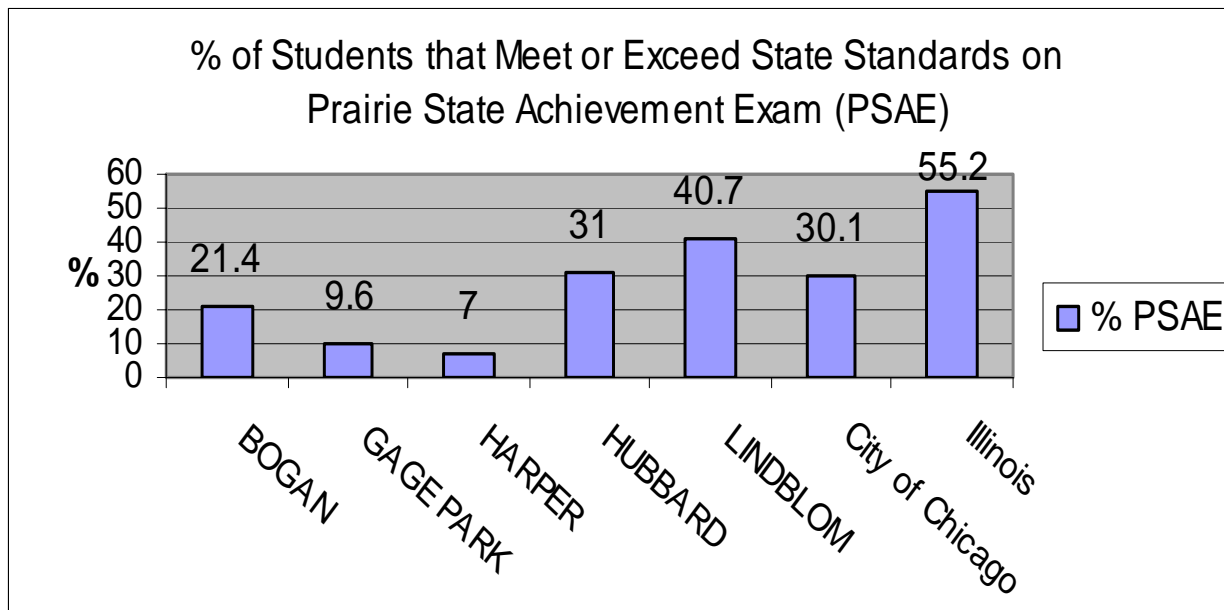


# Elementary and Middle Schools (cont.)

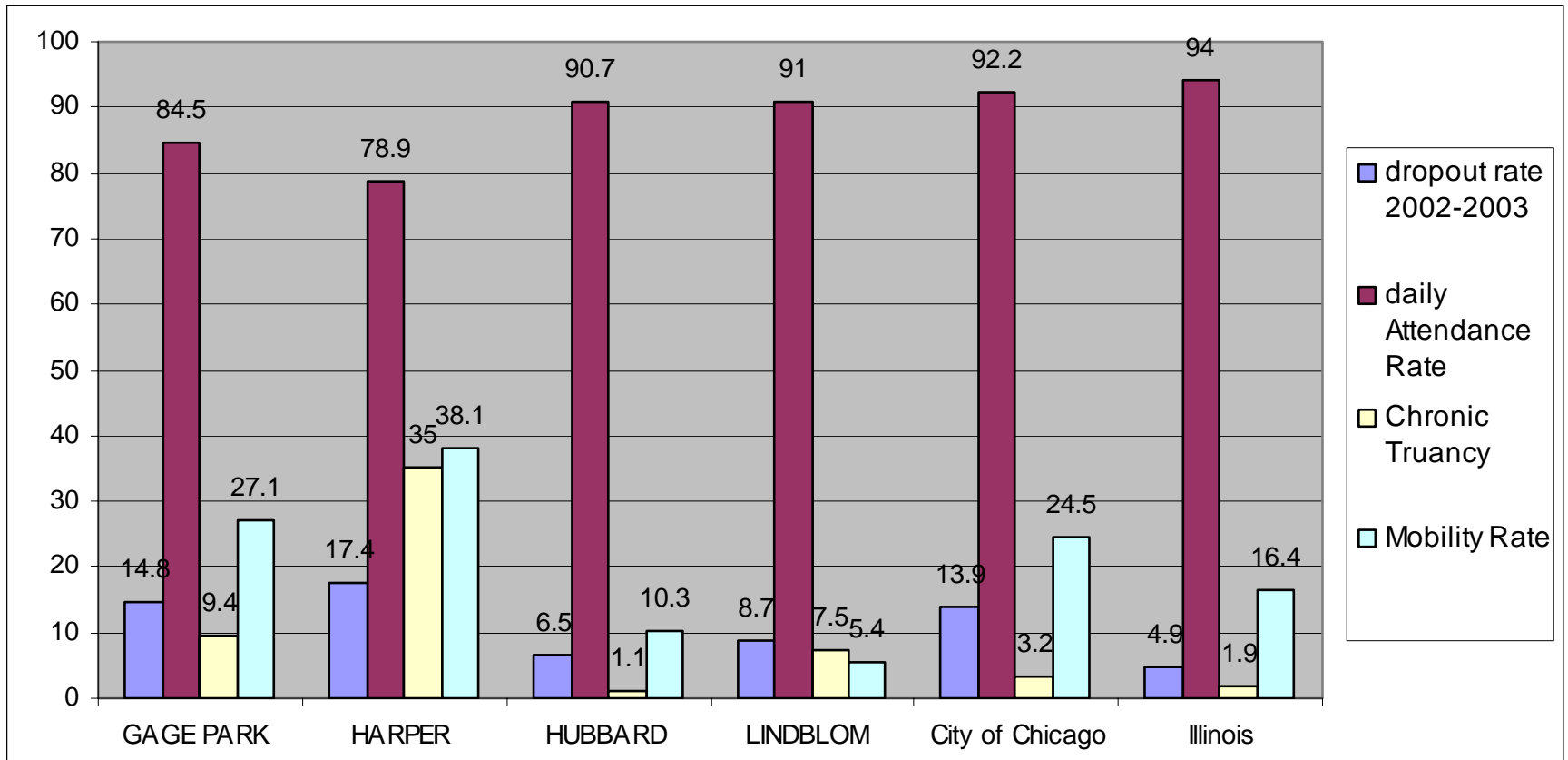


# Area High Schools

- Accountability Ratings: **Gage Park** and **Harper** designated as *Probation*, **Bogan** as *Challenge*, **Hubbard** and **Lindblom** as *Merit*
- None meet the Adequate Yearly Progress Rating
- Only 2 meet the Progress Rating



# Area High Schools (cont.)



# 6. Crime

- Index crimes include:
  - Murder
  - Criminal sexual assault
  - Robbery
  - Aggravated assault/battery
  - Burglary
  - Theft
  - Motor Vehicle Theft
  - Arson

# Chicago Lawn Index Crimes, 2002

- 4226 crimes total
  - 0.26% murder
  - 1% criminal sexual assault
  - 12.3% robbery
  - 14.1% aggravated assault/battery
  - 16.5% burglary
  - 34.7% theft
  - 20.5% motor vehicle theft
  - 0.5% arson

# Index crime comparison

Chicago Lawn	4,226 crimes, 61,412 pop 68.8/1000 population
West Lawn	2,071 crimes, 29,235 pop 70.8/1000 population
West Elsdon	793 crimes, 15,921 pop 49.8/1000 population
Gage Park	1,942 crimes, 39,193 pop 49.5/1000 population
West Englewood	4,335 crimes, 45,282 95.7/1000 population
Ashburn	1,729 crimes, 39,584 pop 43.7/1000 population

# Hate crimes

- 2002: 8 hate crimes
  - 3 race, 4 national origin, 1 sexual orientation
- 2001: 25 hate crimes (highest in City)
  - 7 race, 2 religion, 15 national origin, 1 sexual orientation
- 2000: 29 hate crimes (highest in City)
  - 17 race, 2 religion, 6 national origin, 3 sexual orientation, 1 gender/disability

# Domestic Violence

- 60629 zip code
  - 216 calls to City hotline
  - 94% female callers
  - 41% Black, 11% White, 42% Hispanic
  - 83% conducted in English, 16.2% in Spanish
  - Services requested:
    - 36% shelter
    - 25% counseling
    - 28% legal
    - 6% information